

Handwritten musical score for Bass. The staff shows a sequence of notes: G, F, C, G, F, C, with some notes beamed together in the final measure. The time signature is 4/4.

Handwritten musical score for Oboe. The staff contains a melodic line with eighth and sixteenth notes, including some slurs and ties.

Handwritten musical score for 1st Violin (1: Vl.). The staff contains a melodic line with quarter and eighth notes.

Handwritten musical score for 2nd Violin (2: Vl.). The staff contains a melodic line with quarter and eighth notes.

Handwritten musical score for Viola. The staff contains a melodic line with quarter and eighth notes.

Handwritten musical score for Cello. The staff contains a melodic line with quarter and eighth notes, including some slurs.

Empty musical staves.

Handwritten musical score for Bass. The staff shows notes: G, F, G, F, C, G, F, C, G, F. The time signature is 4/4.

Handwritten musical score for Oboe. The staff contains a few notes, including a half note and a quarter note.

Handwritten musical score for 1st Violin (1: Vl.). The staff contains notes with a slur and a dynamic marking 'p' (piano).

Handwritten musical score for 2nd Violin (2: Vl.). The staff contains notes with a slur and a dynamic marking 'p'.

Handwritten musical score for Viola. The staff contains notes with a slur and a dynamic marking 'p'.

Handwritten musical score for Cello. The staff contains notes with a slur and a dynamic marking 'p'.

Empty musical staves.

Handwritten musical notation on a single staff, showing notes and rests. Includes a handwritten 'd' above the staff and some scribbles at the end.

Empty musical staff.

Handwritten musical notation on a grand staff (treble and bass clefs), showing notes and rests. Includes a handwritten '+' above the bass staff.

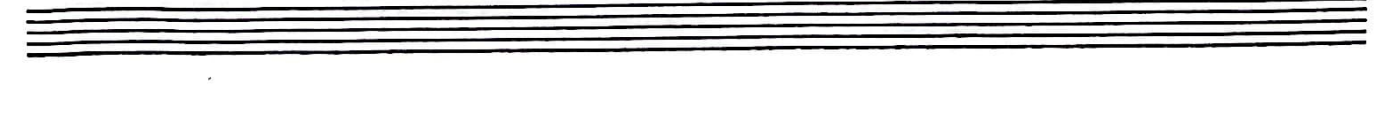
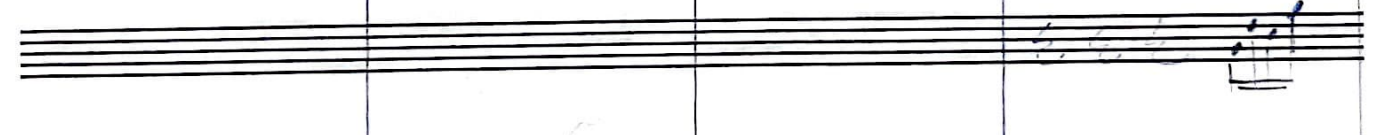
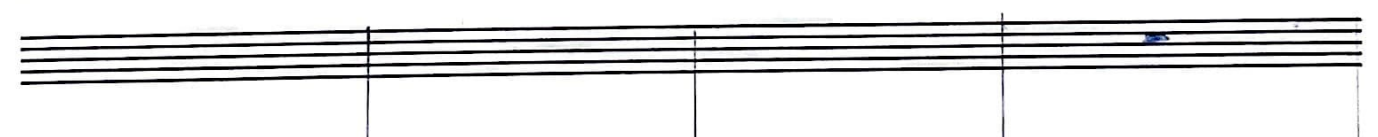
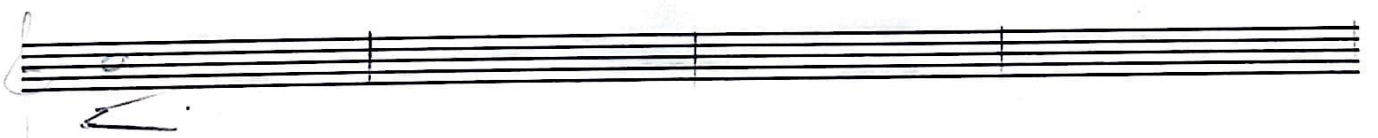
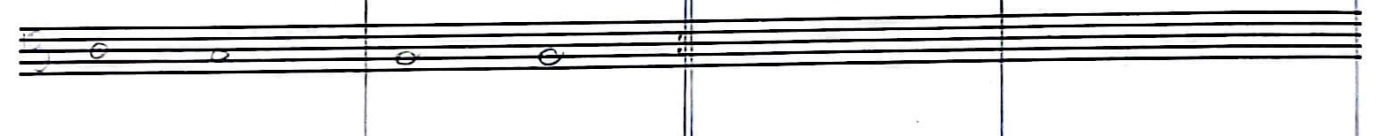
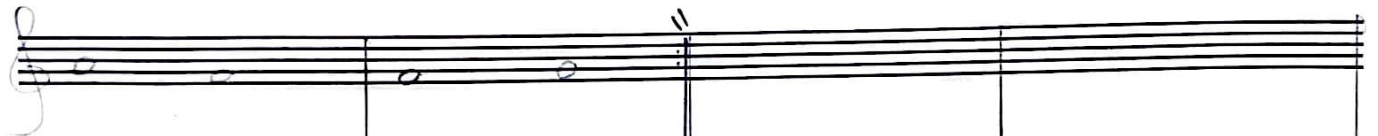
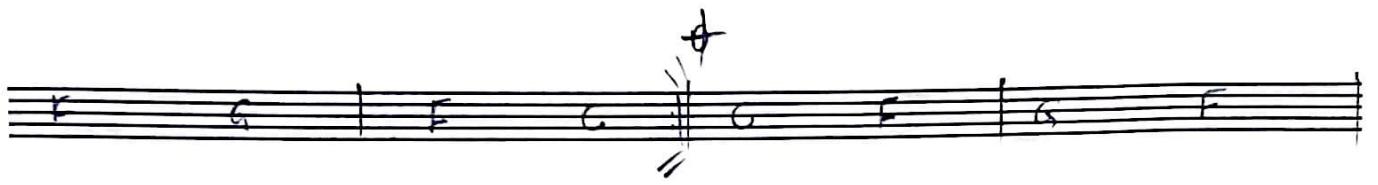
Empty musical staff.

Handwritten musical notation on a single staff, showing notes and rests.

Empty musical staff.

Handwritten musical notation on a grand staff (treble and bass clefs), showing notes and rests.

Empty musical staff.





Handwritten musical notation on a single staff. It begins with a treble clef and a common time signature (C). The first measure contains a quarter note, followed by a dotted quarter note, and then a pair of eighth notes beamed together. The second measure contains a whole note. The staff continues with two empty measures.

Handwritten musical notation on a single staff. It begins with a treble clef. The first measure contains a quarter note, followed by a dotted quarter note, and then a pair of eighth notes beamed together. The second measure contains a whole note. The staff continues with two empty measures.

Handwritten musical notation on a single staff. It begins with a treble clef. The first measure contains a quarter note, followed by a dotted quarter note, and then a pair of eighth notes beamed together. The second measure contains a whole note. The staff continues with two empty measures.

Handwritten musical notation on a single staff. It begins with a treble clef. The first measure contains a quarter note, followed by a dotted quarter note, and then a pair of eighth notes beamed together. The second measure contains a whole note. The staff continues with two empty measures.

Handwritten musical notation on a single staff. It begins with a treble clef. The first measure contains a quarter note, followed by a dotted quarter note, and then a pair of eighth notes beamed together. The second measure contains a whole note. The staff continues with two empty measures.

Handwritten musical notation on a single staff. It begins with a treble clef. The first measure contains a quarter note, followed by a dotted quarter note, and then a pair of eighth notes beamed together. The second measure contains a whole note. The staff continues with two empty measures.

A single empty musical staff.

A single empty musical staff.

A single empty musical staff.

A single empty musical staff.

A single empty musical staff.

A single empty musical staff.

A single empty musical staff.

A single empty musical staff.

A single empty musical staff.