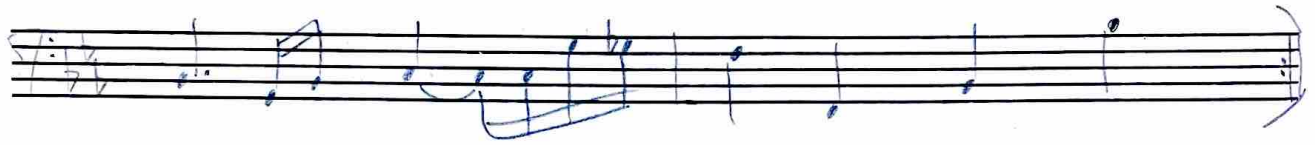
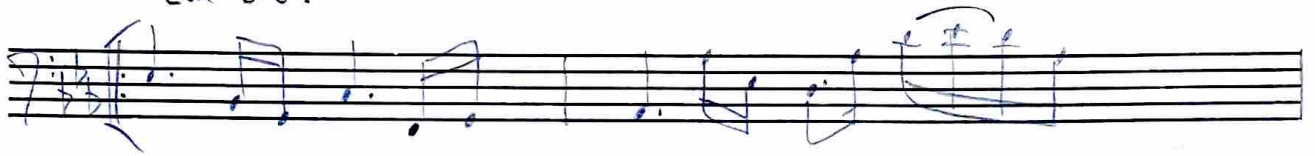


MESMO PECADOR

INTROD

The image displays a handwritten musical score for the piece "MESMO PECADOR". The score is written on 12 staves, each beginning with a treble clef, a 7/4 time signature, and a key signature of one sharp (F#). The notation is handwritten and includes various musical symbols such as notes, rests, and accidentals. The first staff is labeled "INTROD". The score is divided into sections by bar lines and includes some markings like "11" and "12" above certain measures. The handwriting is somewhat sketchy, with some notes and accidentals appearing to be corrected or added.

Em B.G.



Fim

